

Customer:
ОБЩИНА СЕВЛИЕВО

Operator:
План Концепт ЕООД
planconcept@abv.bg

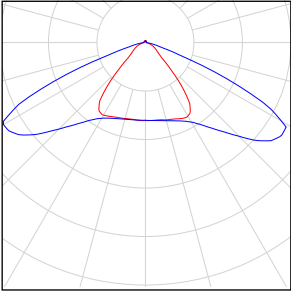
Project address:
I ОУ "ХРИСТО БОТЕВ", УПИ
VII, КВ. 76, ОБЩ. СЕВЛИЕВО

Date:
18.6.2018 г.

МУЛТИФУНКЦИОНАЛНО СПОРТНО ИГРИЩЕ

МУЛТИФУНКЦИОНАЛНО СПОРТНО ИГРИЩЕ КЪМ I ОУ "ХРИСТО БОТЕВ", ОБЩ. СЕВЛИЕВО

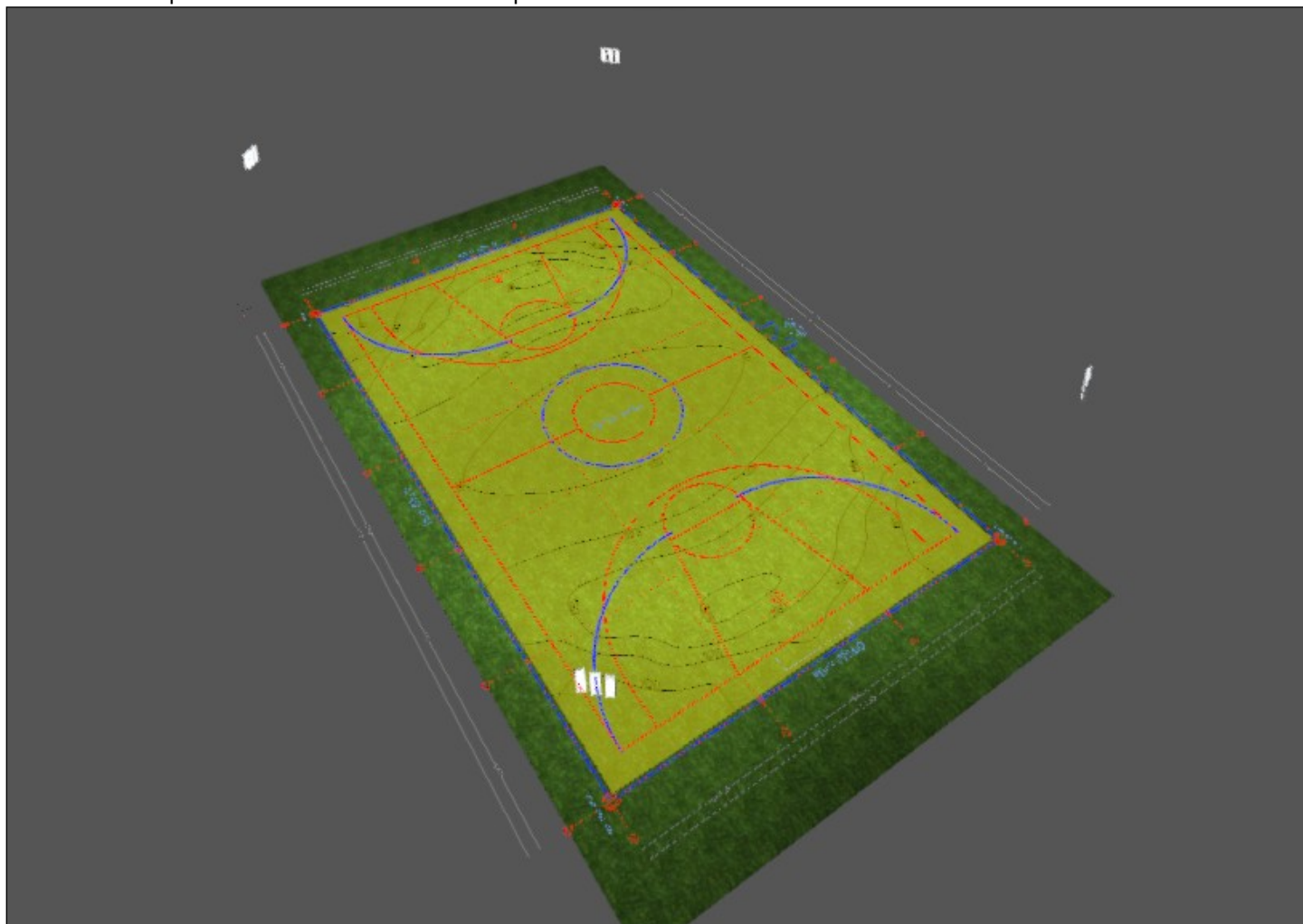
МУЛТИФУНКЦИОНАЛНО СПОРТНО ИГРИЩЕ

Quantity	Luminaire (Luminous emittance)		
12	DIALux - CLL150-200W-CD1-HLG320-36-SO-GL Luminous emittance 1 Fitting: 1x Light output ratio: 100.01% Lamp luminous flux: 27543 lm Luminaire luminous flux: 27545 lm Power: 196.7 W Luminous efficacy: 140.1 lm/W Colourimetric data 1x: CCT 3000 K, CRI 100	See our luminaire catalog for an image of the luminaire.	

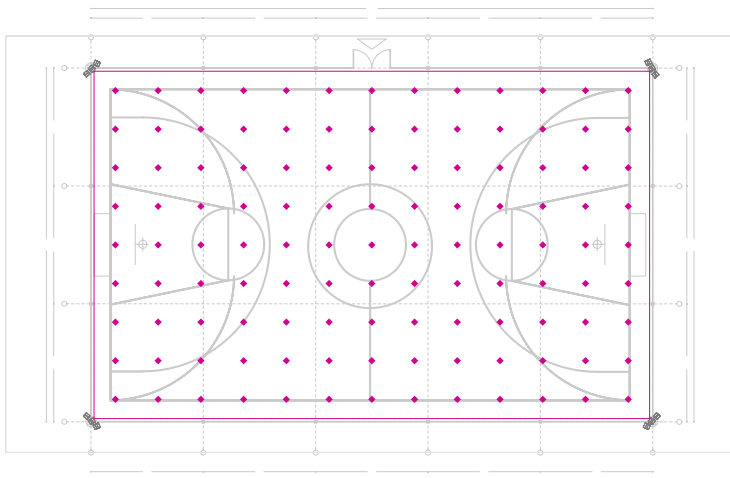
Total lamp luminous flux: 330516 lm, Total luminaire luminous flux: 330540 lm, Total Load: 2360.4 W, Luminous efficacy: 140.0 lm/W

МУЛТИФУНКЦИОНАЛНО СПОРТНО ИГРИЩЕ

МУЛТИФУНКЦИОНАЛНО СПОРТНО ИГРИЩЕ



Calculation surface 1 / Perpendicular illuminance



Maintenance factor: 0.80

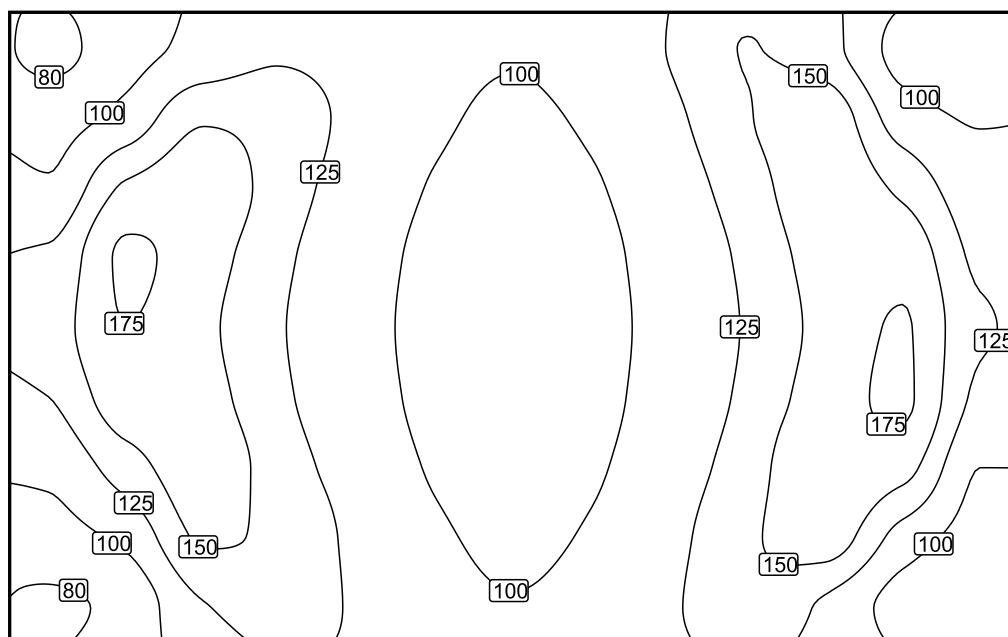
Calculation surface 1: Perpendicular illuminance (Grid)

Light scene: Light scene 1

Average: 121 lx, Min: 75.2 lx, Max: 179 lx, Min/average: 0.62, Min/max: 0.42

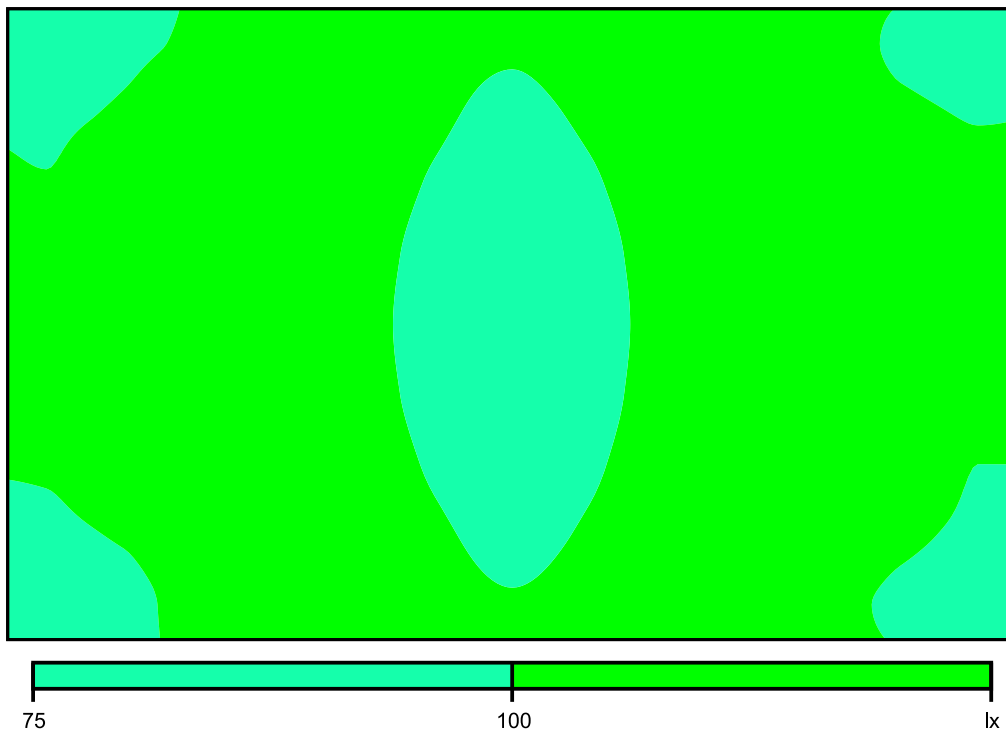
Height: 0.000 m

Isolines [lx]



Scale: 1 : 200

False colours [lx]



Scale: 1 : 200

Value grid [lx]

75	91	107	120	114	105	102	108	126	151	134	92	84
91	108	147	139	117	102	97	103	119	148	165	111	98
103	154	167	137	113	99	94	98	112	138	167	144	109
129	179	162	130	108	96	92	96	108	130	160	167	121
138	175	156	127	106	95	91	95	107	127	158	177	127
125	164	158	129	108	96	92	96	108	130	164	179	120
105	139	164	137	112	98	94	98	112	138	172	159	100
92	105	153	144	118	102	97	102	118	145	163	114	91
77	86	123	137	121	107	101	106	122	140	121	90	80

Scale: 1 : 200

Value chart [lx]

m	-12.323	-10.269	-8.215	-6.162	-4.108	-2.054	0.000	2.054	4.108	6.162	8.215	10.269	12.323
7.419	75.2	91.5	107	120	114	105	102	108	126	151	134	92.0	83.9
5.564	91.3	108	147	139	117	102	97.4	103	119	148	165	111	98.0
3.710	103	154	167	137	113	98.6	94.1	98.5	112	138	167	144	109
1.855	129	179	162	130	108	95.9	91.9	95.9	108	130	160	167	121
0.000	138	175	156	127	106	95.0	91.3	95.1	107	127	158	177	127

m	-12.323	-10.269	-8.215	-6.162	-4.108	-2.054	0.000	2.054	4.108	6.162	8.215	10.269	12.323
-1.855	125	164	158	129	108	95.9	91.9	95.8	108	130	164	179	120
-3.710	105	139	164	137	112	98.4	93.7	98.1	112	138	172	159	100.0
-5.564	91.7	105	153	144	118	102	96.8	102	118	145	163	114	91.3
-7.419	77.1	85.5	123	137	121	107	101	106	122	140	121	90.3	80.0